

*STATISTICAL REPORT*

*OF*

*GRADES AWARDED*

*2018-19/II*



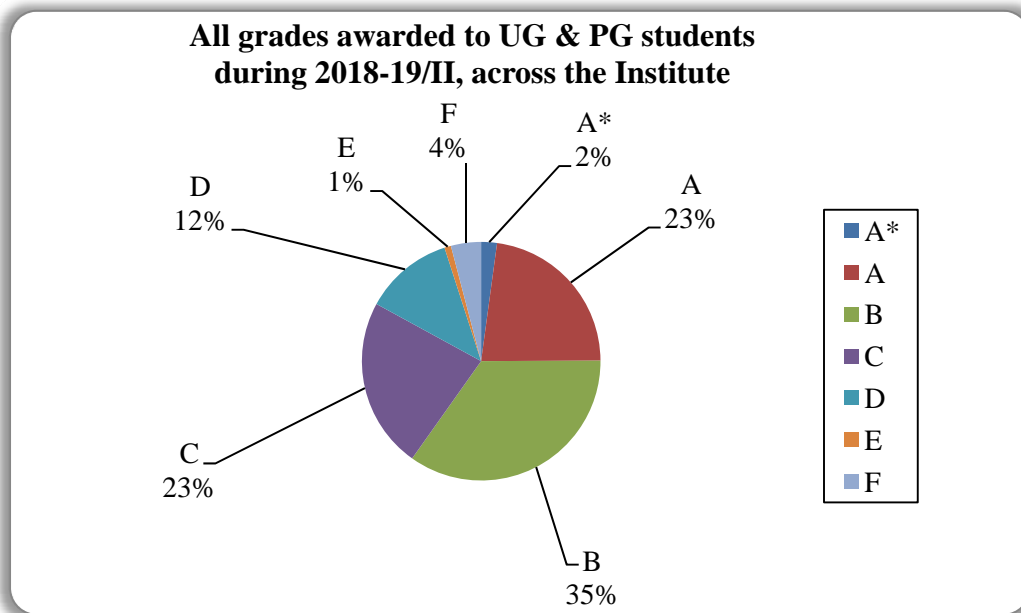
**JUNE-2019**

*Office of the Dean of Academic Affairs*

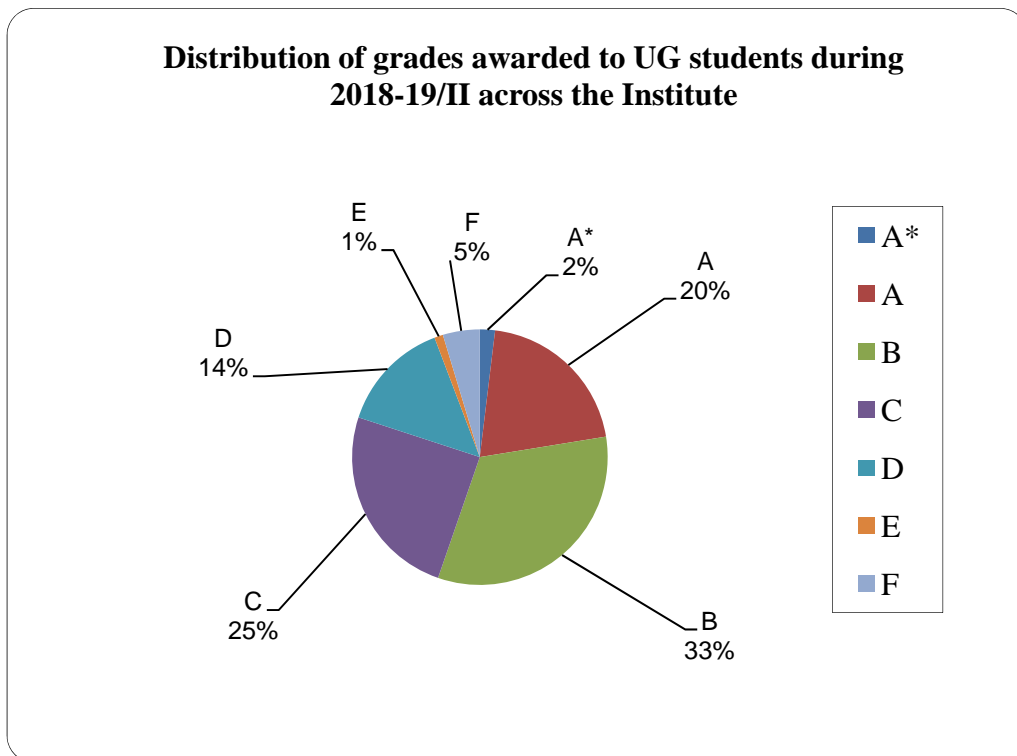
*Indian Institute of Technology Kanpur*

# LIST OF CONTENTS

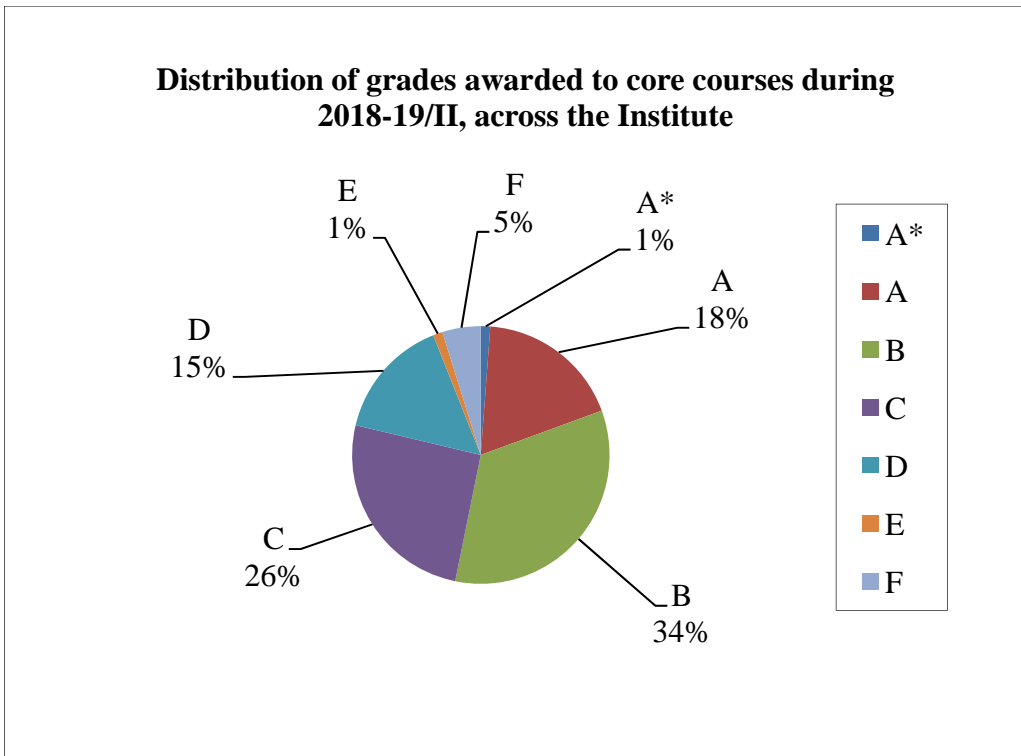
S.No.	CONTENTS	Page No.
1	Figure 1: Distribution of all grades awarded to UG and PG students Across the institute.	1
2	Figure 2: Distribution of all grades awarded to UG students	1
3	Figure 3: Distribution of all Core courses grades awarded to UG students	2
4	Figure 4: Distribution of all grades awarded to PG students	2
5	Figure 5: Distribution of all grades awarded to UG students	3
6	Figure 6: Distribution of all grades awarded to PG students	4
7	Figure 7: AE department distribution of grades awarded to UG students	5
8	Figure 8: BSBE department distribution of grades awarded to UG students	5
9	Figure 9: CE department distribution of grades awarded to UG students	6
10	Figure 10: CHE department distribution of grades awarded to UG students	6
11	Figure 11: CHM department distribution of grades awarded to UG students	7
12	Figure 12: CSE department distribution of grades awarded to UG students	7
13	Figure 13: ECO department distribution of grades awarded to UG students	8
14	Figure 14: EE department distribution of grades awarded to UG students	8
15	Figure 15: ES department distribution of grades awarded to UG students	9
16	Figure 16: HSS department distribution of grades awarded to UG students	9
17	Figure 17: IME department distribution of grades awarded to UG students	10
18	Figure 18: Design department distribution of grades awarded to UG students	10
19	Figure 19: ME department distribution of grades awarded to UG students	11
20	Figure 20: MSE department distribution of grades awarded to UG students	11
21	Figure 21: MTH department distribution of grades awarded to UG students	12
22	Figure 22: PHY department distribution of grades awarded to UG students	12
23	Figure 23: PSE department distribution of grades awarded to UG students	13
24	Figure 24: AE department distribution of grades awarded to PG students	14
25	Figure 25: BSBE department distribution of grades awarded to PG students	14
26	Figure 26: CE department distribution of grades awarded to PG students	15
27	Figure 27: CGS department distribution of grades awarded to PG students	15
28	Figure 28: CHE department distribution of grades awarded to PG students	16
29	Figure 29: CHM department distribution of grades awarded to PG students	16
30	Figure 30: CSE department distribution of grades awarded to PG students	17
31	Figure 31: ECO department distribution of grades awarded to PG students	17
32	Figure 32: EE department distribution of grades awarded to PG students	18
33	Figure 33: ES department distribution of grades awarded to PG students	18
34	Figure 34: HSS department distribution of grades awarded to PG students	19
35	Figure 35: IME department distribution of grades awarded to PG students	19
36	Figure 36: Design department distribution of grades awarded to PG students	20
37	Figure 37: ME department distribution of grades awarded to PG students	20
38	Figure 38: MSE department distribution of grades awarded to PG students	21
39	Figure 39: MSP department distribution of grades awarded to PG students	21
40	Figure 40: MTH department distribution of grades awarded to PG students	22
41	Figure 41: PHY department distribution of grades awarded to PG students	22
42	Figure 42: PSE department distribution of grades awarded to PG students	23



**Figure 1**  
Distribution of all grades awarded to UG and PG students across the institute

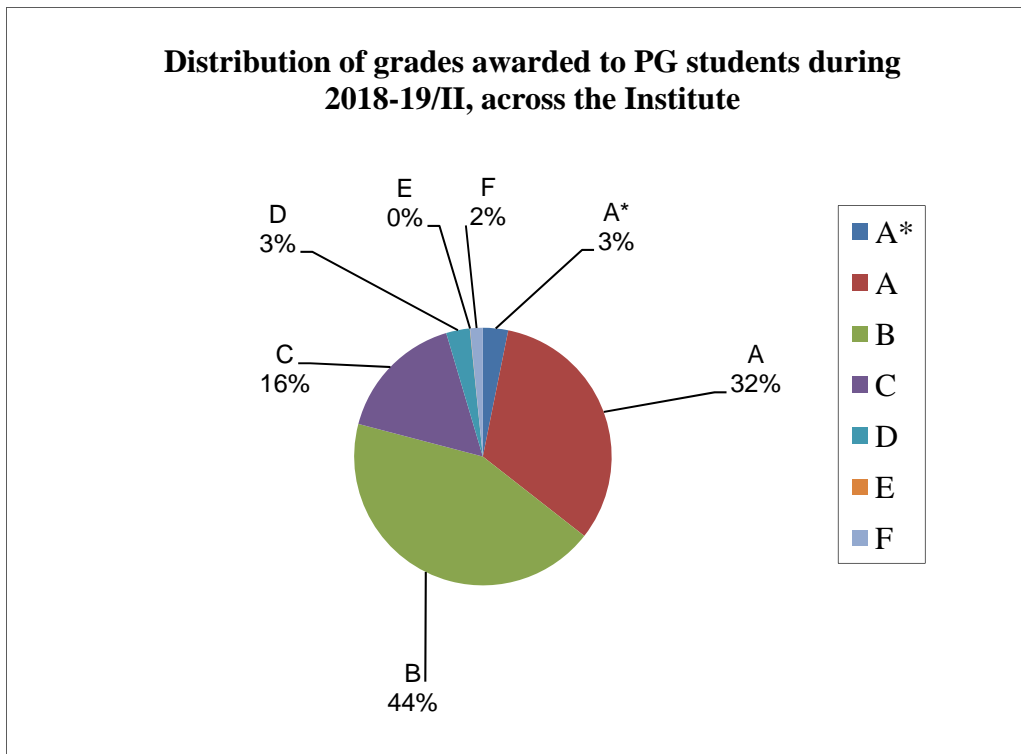


**Figure 2**  
(UG students) include all students who have a 5 or 6-digit roll number  
(All B. Tech, Msc-2yr, BT part of BT-MT)



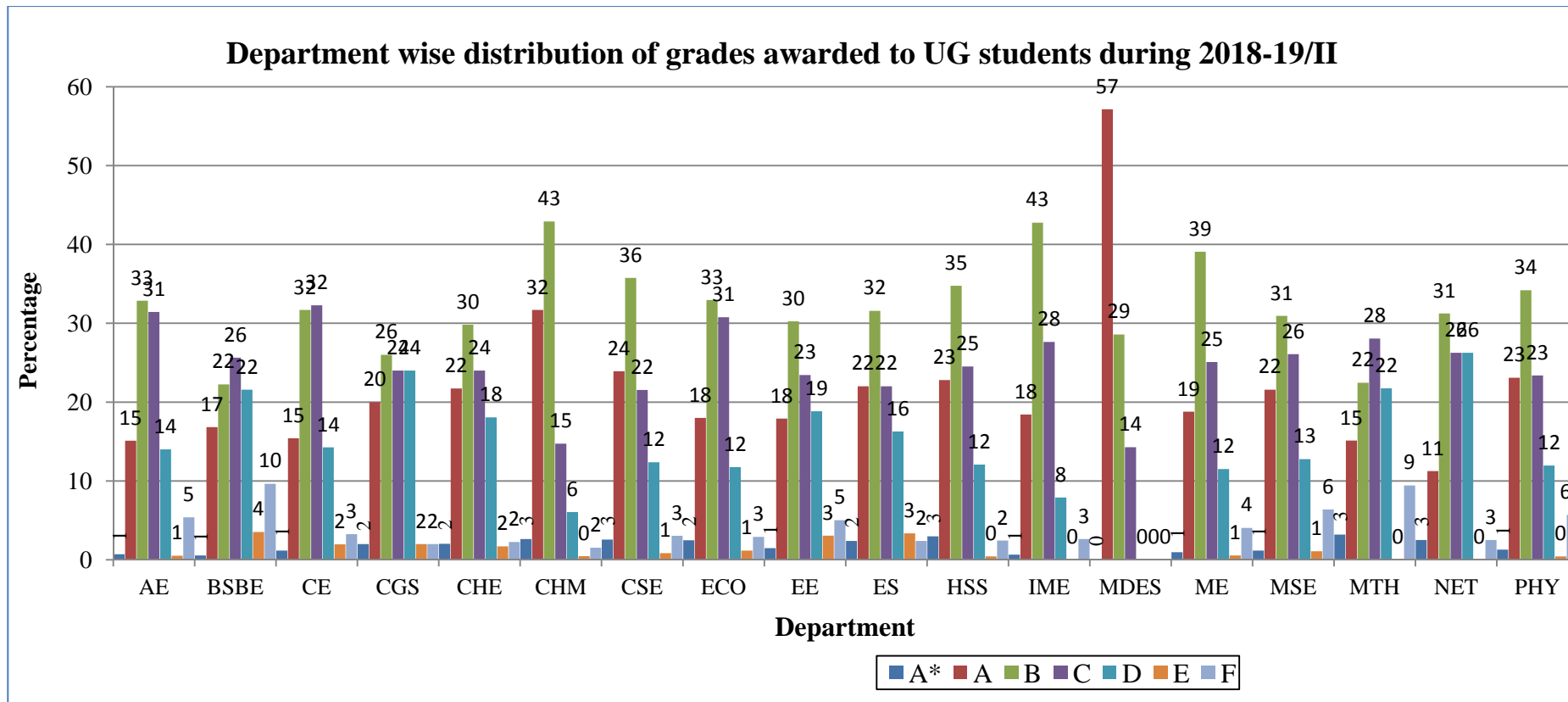
**Figure3:**

**Data for Core course numbers:** TA101A, LIF101A, ESO202A, ESO201A, CHM101A, CHM102A, CSO202A, ESC101A, ESO207A, HSO201A, ESC201A, ESO203A, ART103A, ART401A, ART402A, ART406A, ENG123A, ENG423A, ENG436A, ENG438A, ENG439A, ENG448A, ENG452A, ENG457A, PHI142A, PHI447A, PHI450A, PSY151A, PSY451A, PSY454A, PSY499A, SOC171A, SOC470A, SOC473A, SOC481A, SOC482A, SOC486A, TA202A, TA201A, MSO201A, MTH101A, MTH102A, PHY101A, PHY102A, PHY103A, PSO201A

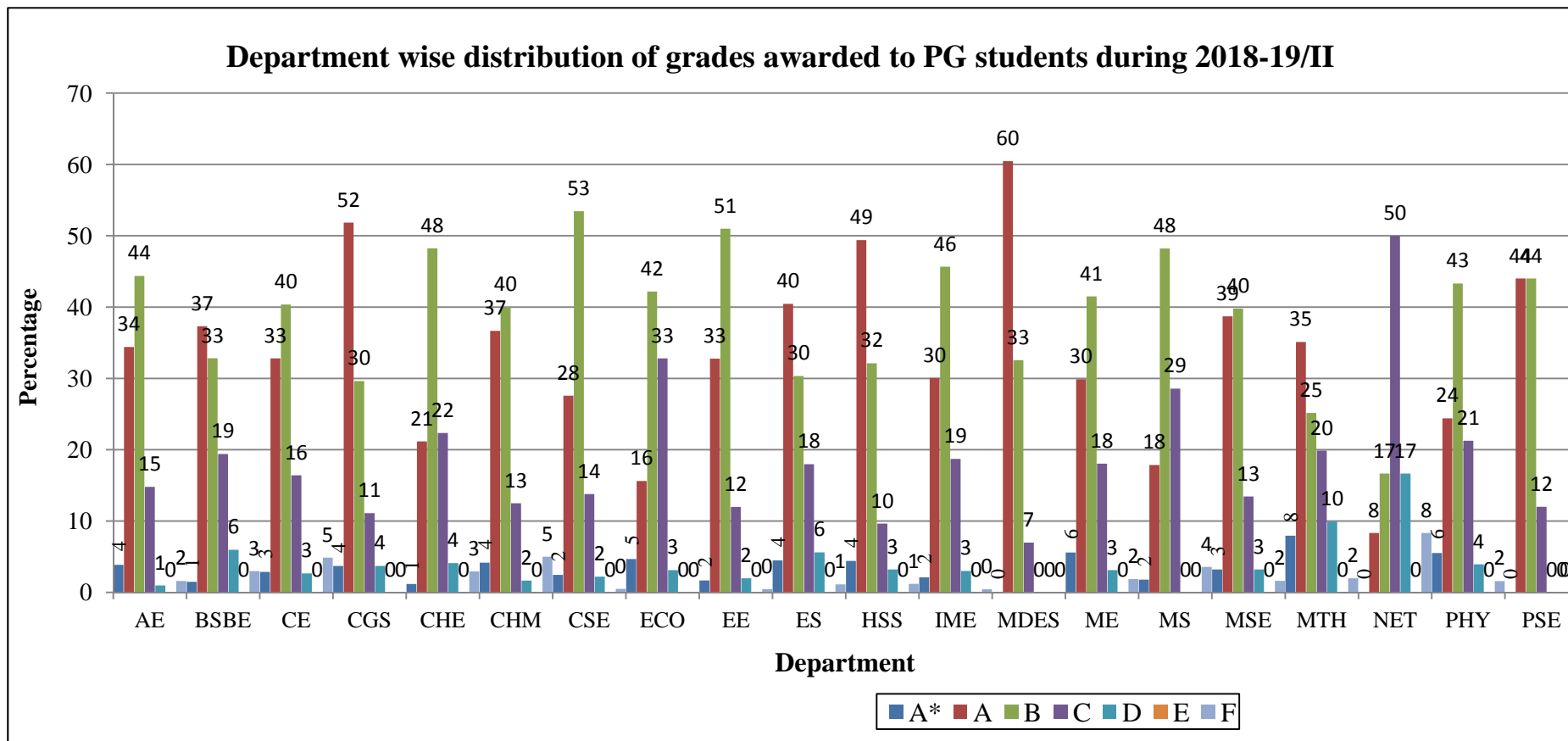


**Figure 4:**

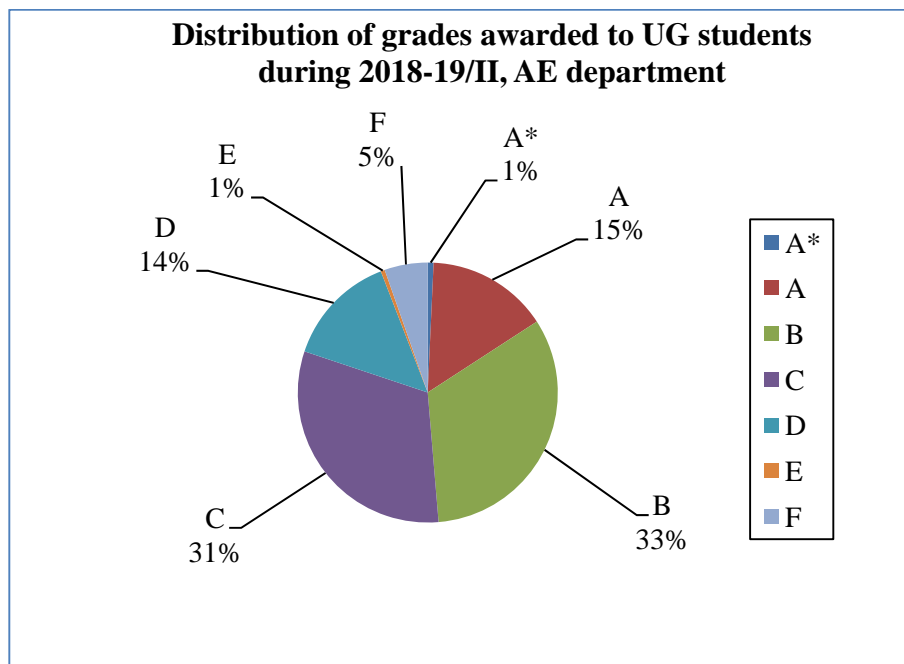
PG students include all students (All M. Tech, MT Part of BT-MT, PhD, MBA, M. Des, and VLFM)



**Figure 5:** Distribution of all grades awarded to UG students

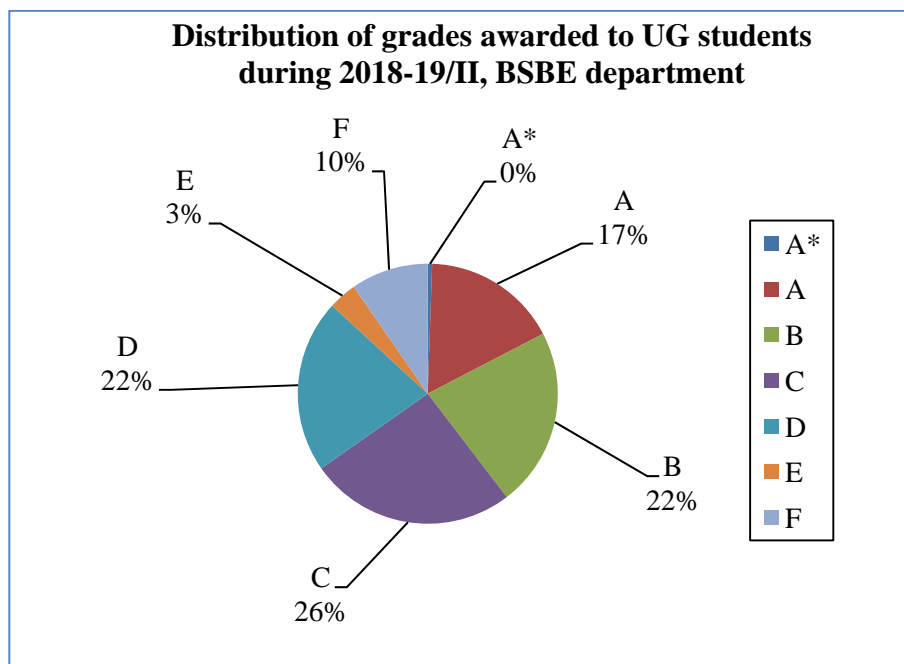


**Figure 6:** Distribution of all grades awarded to PG students



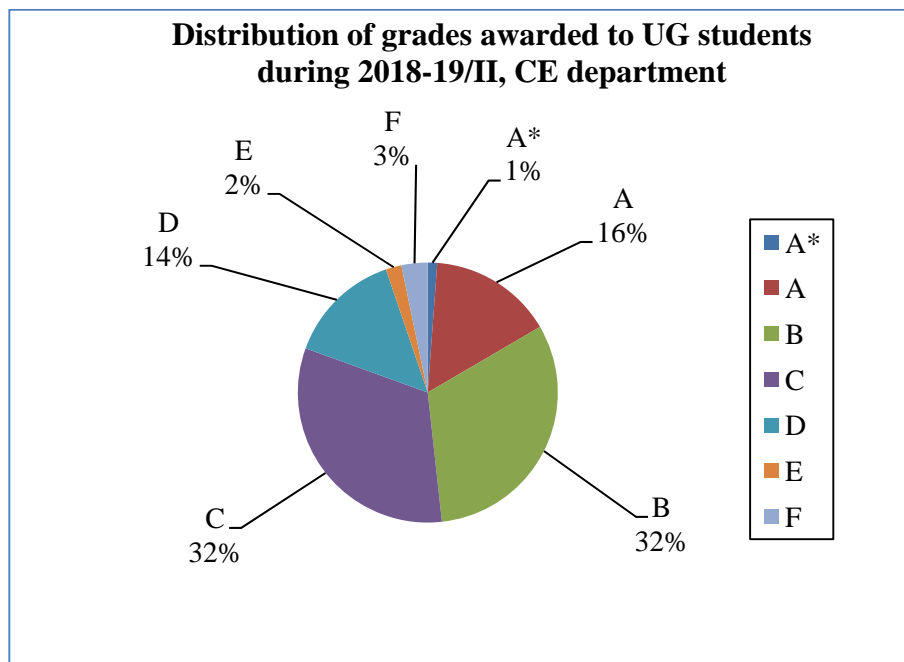
**Figure 7**

Data for course numbers: AE211A, AE251A, AE322A, AE341A, AE351A, AE361A, AE421A, AE462A, AE471A, AE472A, AE481A, AE604A, AE608A, AE621A, AE633A, AE640A, AE653A, AE662A, AE675A, AE681A, AE747A, TA101A



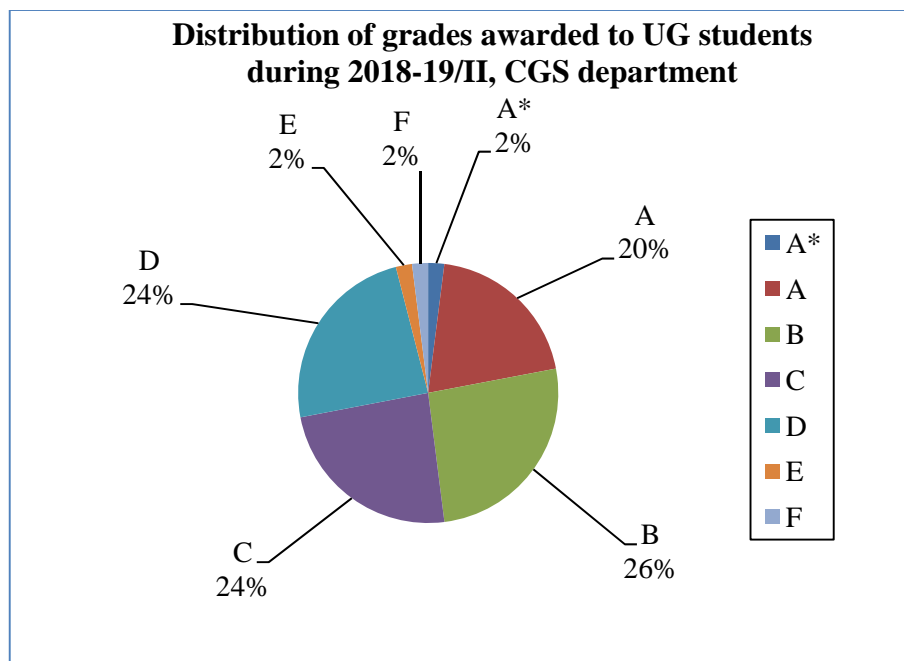
**Figure 8**

Data for course numbers: BSE221A, BSE222A, BSE223A, BSE321A, BSE322A, BSE399A, BSE421A, BSE499A, BSE612A, BSE615A, BSE616A, BSE633A, BSE652A, BSE653A, BSE654A, LIF101A



**Figure 9**

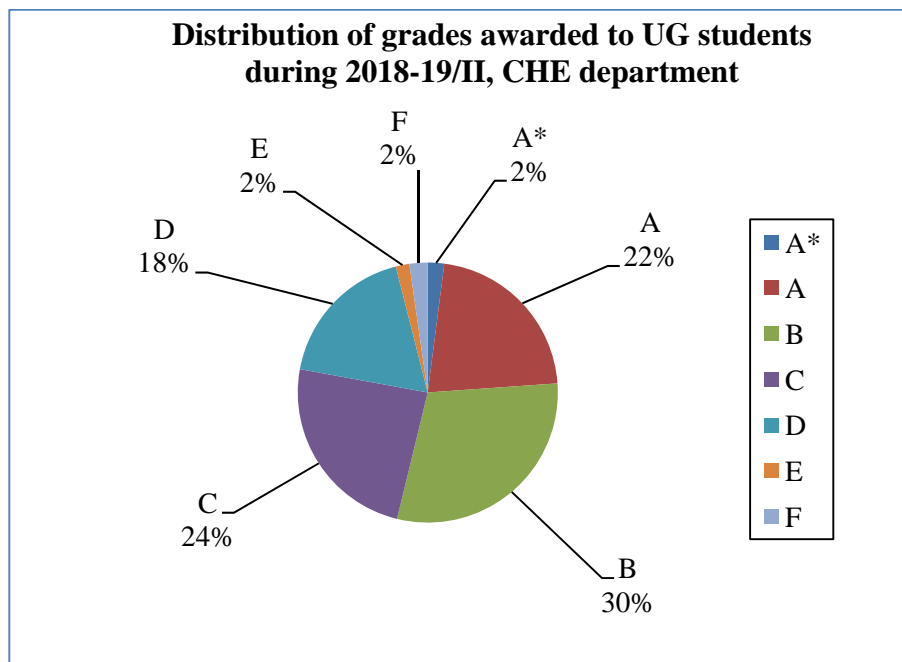
Data for course numbers: CE242A, CE262A, CE272A, CE332A, CE352A, CE372A, CE382A, CE412A, CE432A, CE441B, CE462A, CE491A, CE492A, CE613A, CE617A, CE622A, CE630A, CE636A, CE643B, CE645A, CE647A, CE667A, CE669A, CE674A, CE684B, CE685A, CE725A, CE763A, CE764A, CE765B, CE766A, ESO202A



**Figure 10**

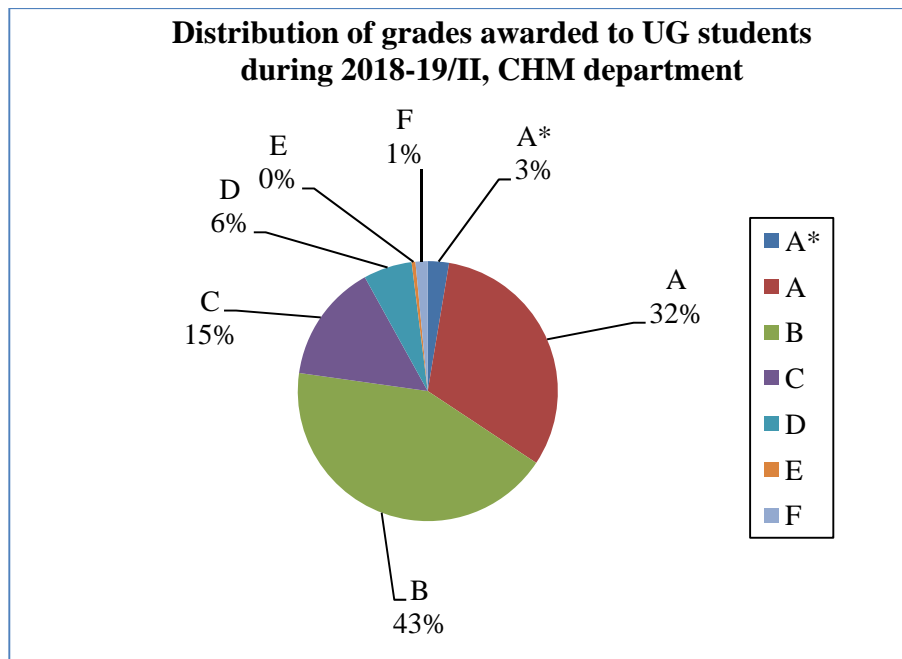
Data for course numbers: CGS603A, CGS651A, CGS702A





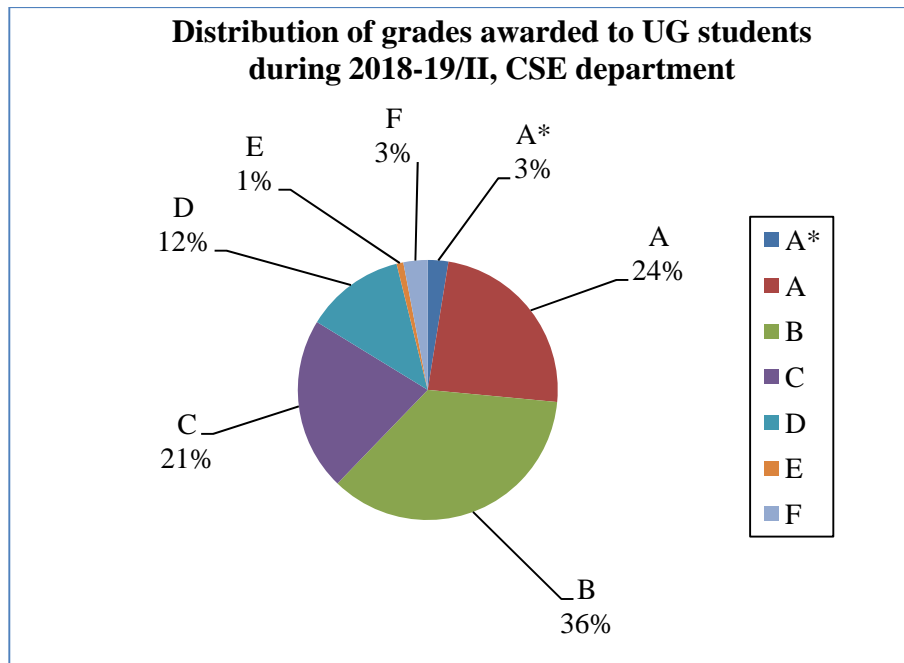
**Figure 11**

Data for course numbers: CHE211A, CHE221A, CHE261A, CHE331A, CHE362A, CHE381A, CHE391A, CHE398A, CHE497A, CHE611A, CHE621A, CHE622A, CHE626A, CHE633A, CHE641A, CHE659A, CHE677A, CHE688A, ESO201A



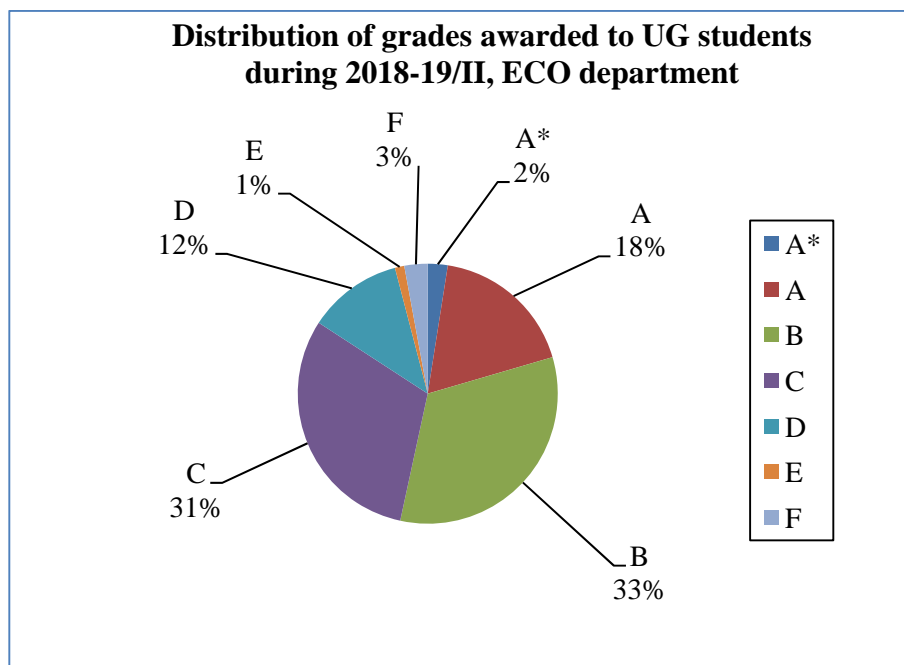
**Figure 12**

Data for course numbers: CHM101A, CHM102A, CHM202A, CHM222A, CHM242A, CHM322A, CHM342A, CHM344A, CHM392A, CHM402A, CHM443A, CHM481A, CHM491A, CHM492A, CHM599, CHM602A, CHM609A, CHM616A, CHM631A, CHM636A, CHM649A, CHM650A, CHM662A, CHM681A, CHM684A, CHM696A, CHM700, CSO202A, CSO203A



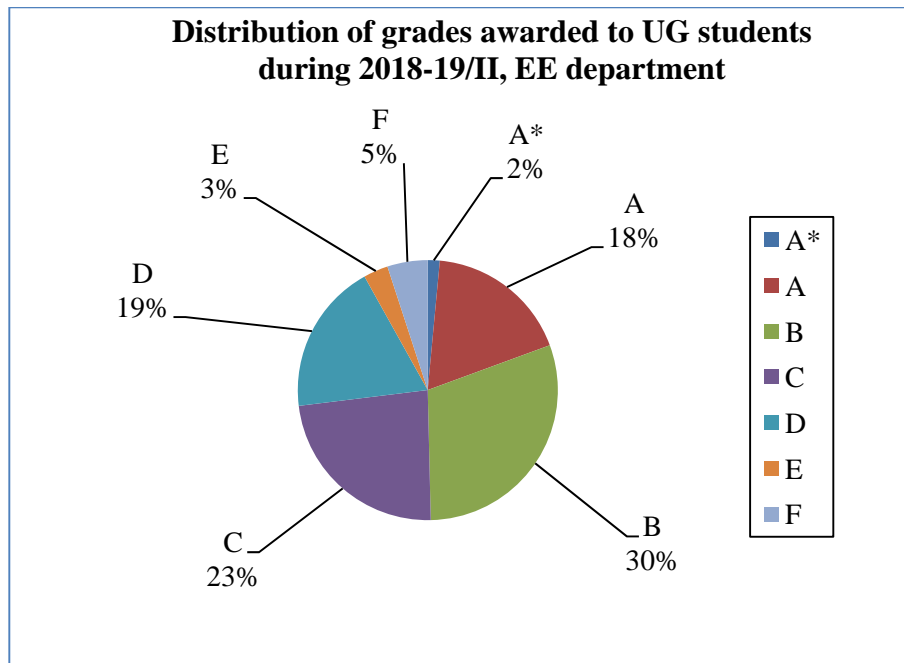
**Figure 13**

Data for course numbers: CS220A, CS251A, CS315A, CS335A, CS396A, CS422A, CS455A, CS499A, CS628A, CS633A, CS634A, CS636A, CS638A, CS640A, CS641A, CS656A, CS682A, CS687A, CS698C, CS698X, CS730A, CS731A, CS748A, CS783A, CS786A, ESC101A, ESO207A



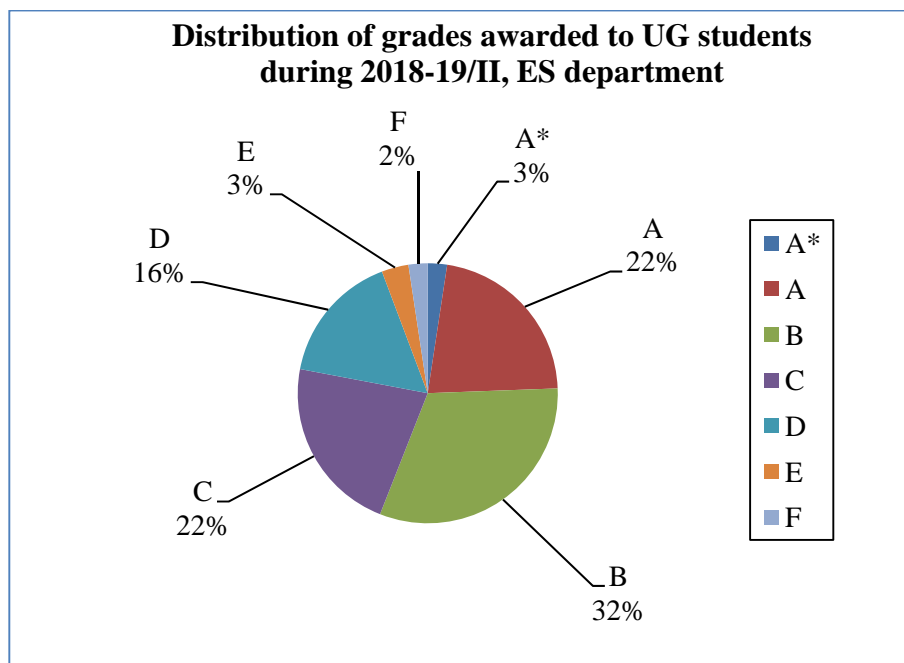
**Figure 14**

Data for course numbers: ECO101A, ECO221A, ECO261A, ECO311A, ECO342A, ECO399A, ECO413A, ECO499A, ECO545A, ECO711A, ECO753A, ECO754A, HSO201A

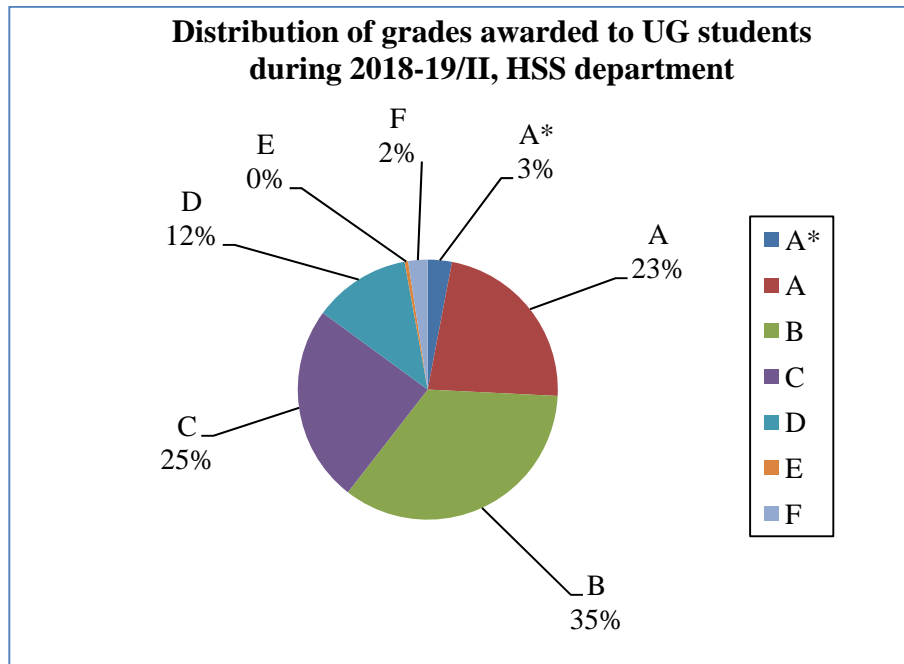


**Figure 15**

Data for course numbers: EE210A, EE250A, EE301A, EE311A, EE321A, EE340A, EE360A, EE381A, EE391A, EE392A, EE416A, EE491A, EE492A, EE600A, EE604A, EE609A, EE618A, EE619A, EE620A, EE623A, EE627A, EE636A, EE638A, EE665A, EE671A, EE678A, EE698A, EE698C, EE698H, EE698N, EE698O, EE698P, EE698Q, EE698T, EE698Z, ESC201A, ESO203A

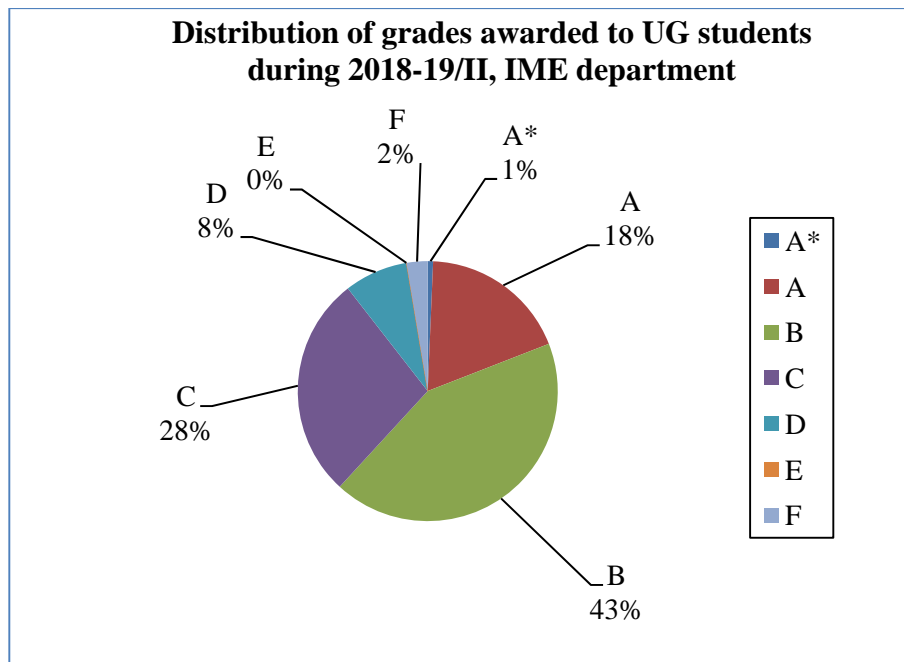


**Figure 16** Data for course numbers: ES312A, ES313A, ES314A, ES315A, ES392A, ES413A, ES414A, ES415A, ES416A, ES419A, and ES657A



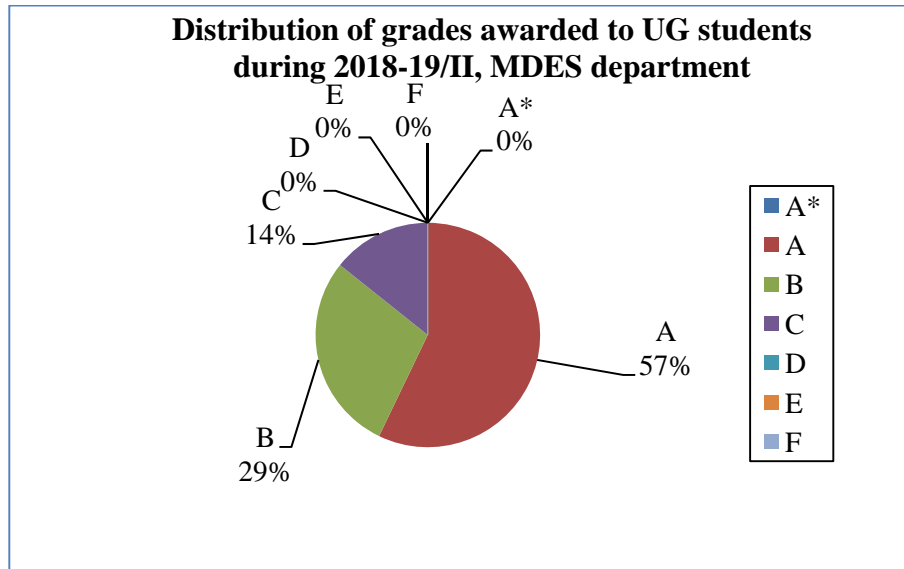
**Figure 17**

Data for course numbers: ART103A, ART401A, ART402A, ART406A, ART703A, ART708A, ART711A, ECO201A, ECO764A, ENG123A, ENG423A, ENG436A, ENG438A, ENG439A, ENG448A, ENG452A, ENG453A, ENG457A, ENG708A, ENG743A, ENG750A, ENG764A, ENG777A, PHI142A, PHI447A, PHI450A, PHI757A, PSY151A, PSY451A, PSY454A, PSY499A, PSY772A, PSY790A, SOC171A, SOC470A, SOC473A, SOC481A, SOC482A, SOC486A, SOC720A



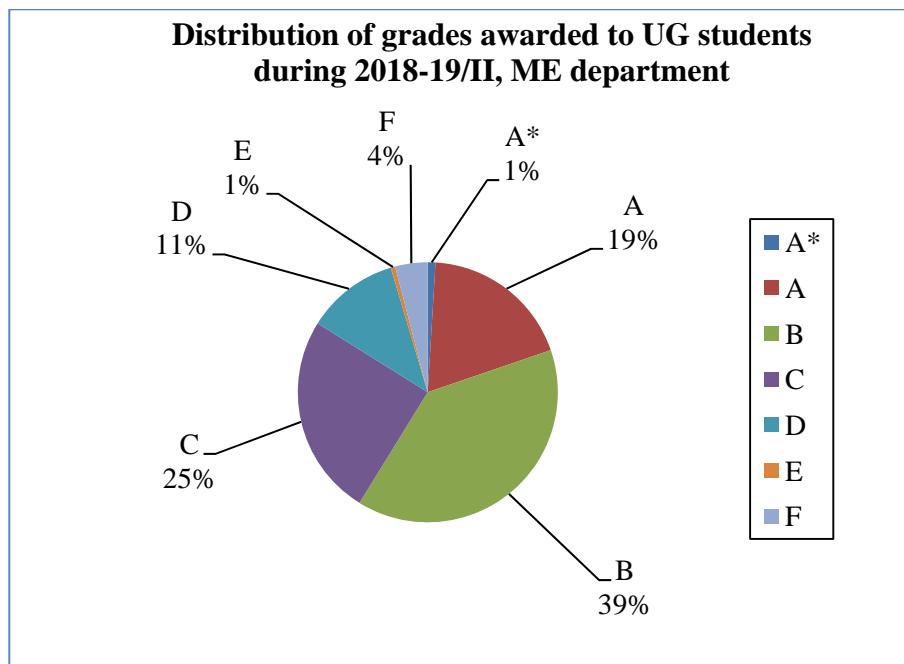
**Figure 18**

Data for course numbers: IME625A, IME634A, IME639A, IME642A, MBA616A, MBA617A, MBA622A, MBA633A, MBA661A, MBA665A, MBA746A, MBA771A, MBA775A, MBA781A, MBA782A



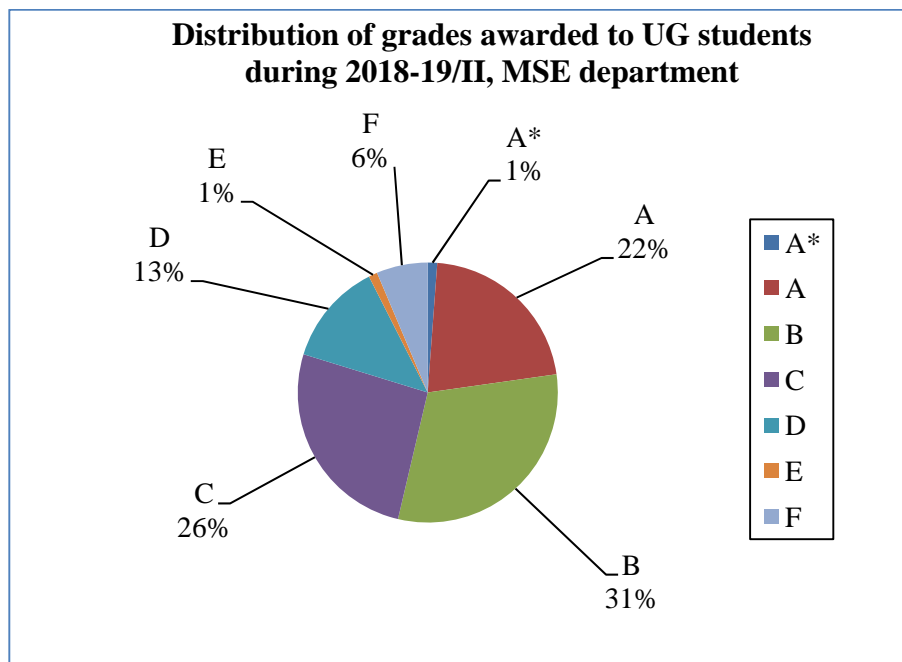
**Figure 19**

Data for course numbers: DES623A, DES682A



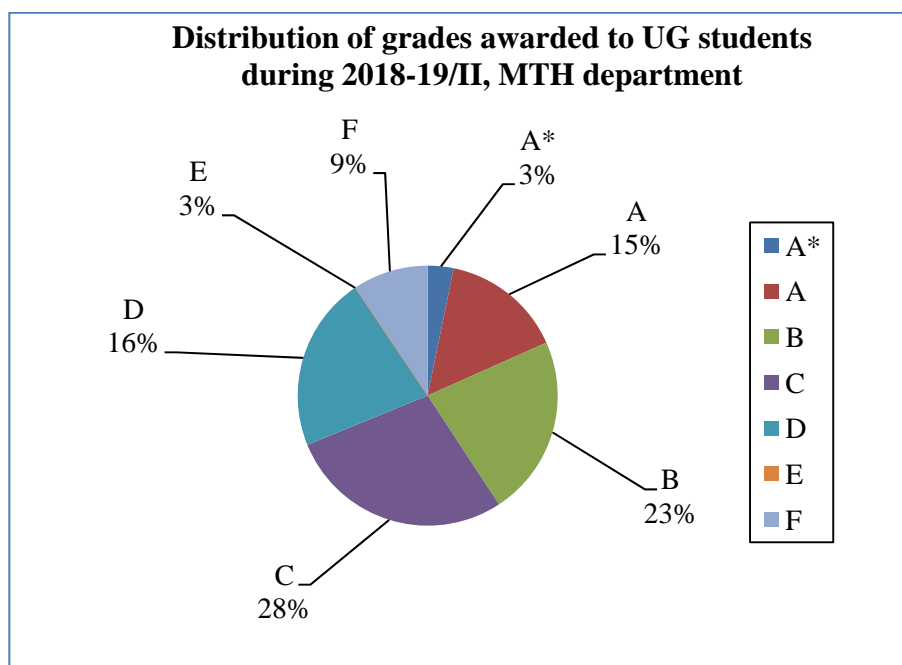
**Figure 20**

Data for course numbers: IDC603A, ME222A, ME231A, ME341A, ME351A, ME354A, ME452A, ME461A, ME498A, ME623A, ME630A, ME642A, ME643A, ME647A, ME648A, ME649A, ME668A, ME698B, ME698C, ME698D, ME742A, ME751A, ME752A, ME756A, ME763A, ME765A, ME778A, TA202A



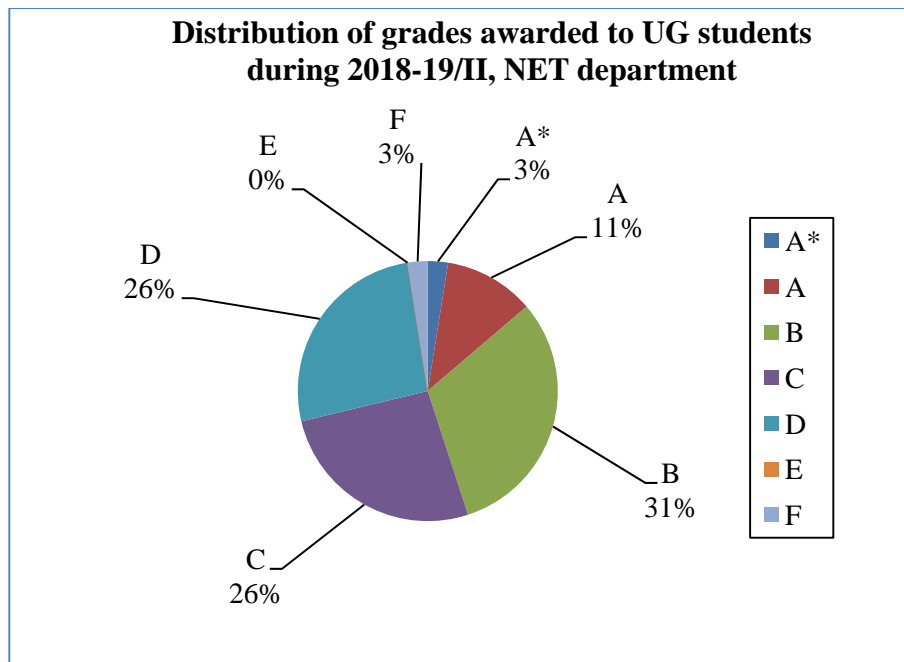
**Figure 21**

Data for course numbers: MSE202A, MSE203A, MSE204A, MSE304A, MSE305A, MSE312A, MSE314A, MSE315A, MSE398A, MSE421A, MSE449A, MSE604A, MSE611A, MSE631A, MSE638A, MSE639A, MSE667A, MSE676A, MSE683A, TA201A

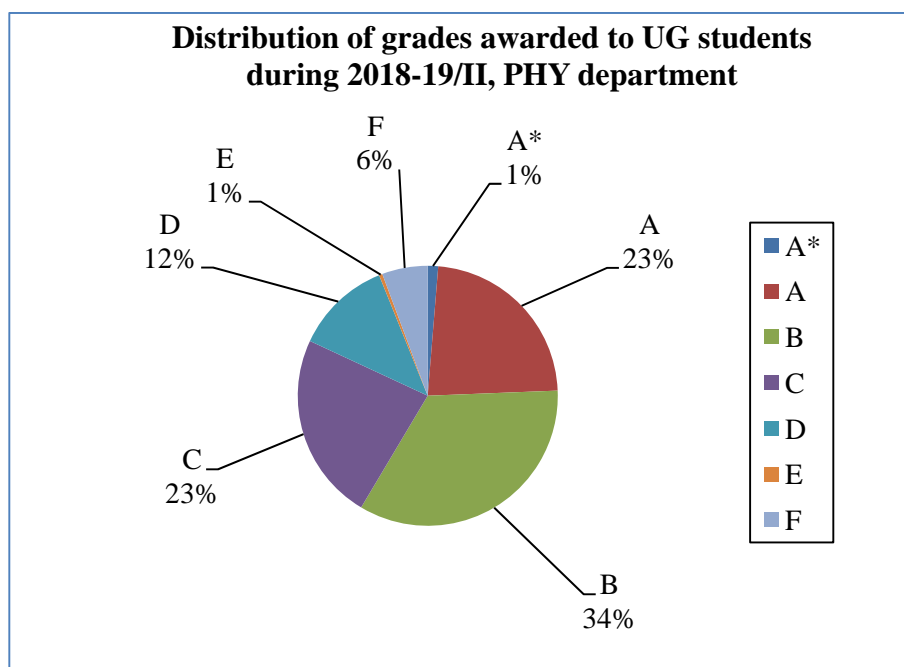


**Figure 22**

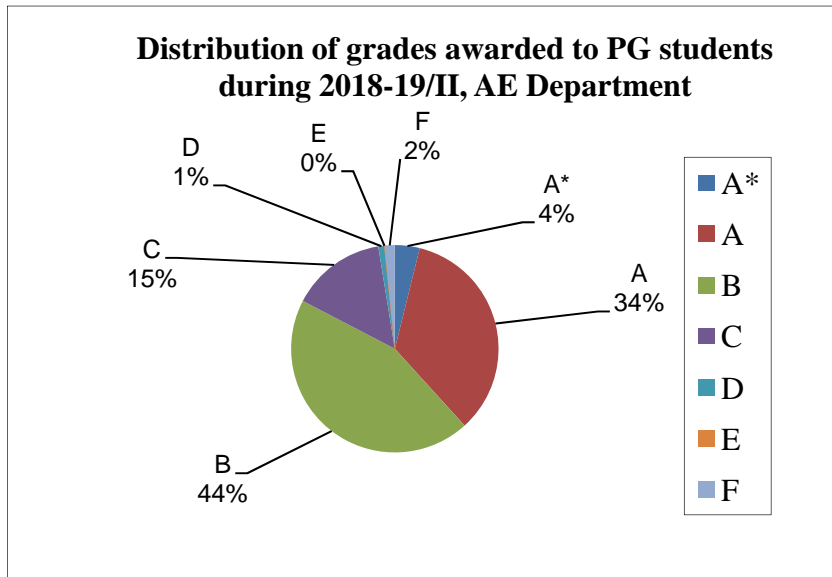
Data for course numbers: MSO201A, MTH101A, MTH102A, MTH204A, MTH301A, MTH304A, MTH308A, MTH308B, MTH309A, MTH392A, MTH393A, MTH404A, MTH416A, MTH418A, MTH421A, MTH424A, MTH513A, MTH514A, MTH516A, MTH523A, MTH535A, MTH598A, MTH599A, MTH611A, MTH624A, MTH628A, MTH633A, MTH635A, MTH638A, MTH648A, MTH649A, MTH653A, MTH678A, MTH686A, MTH696A, MTH701A, MTH702A, MTH703A, MTH732A, MTH770A



**Figure 23**  
Data for course numbers: NT611A

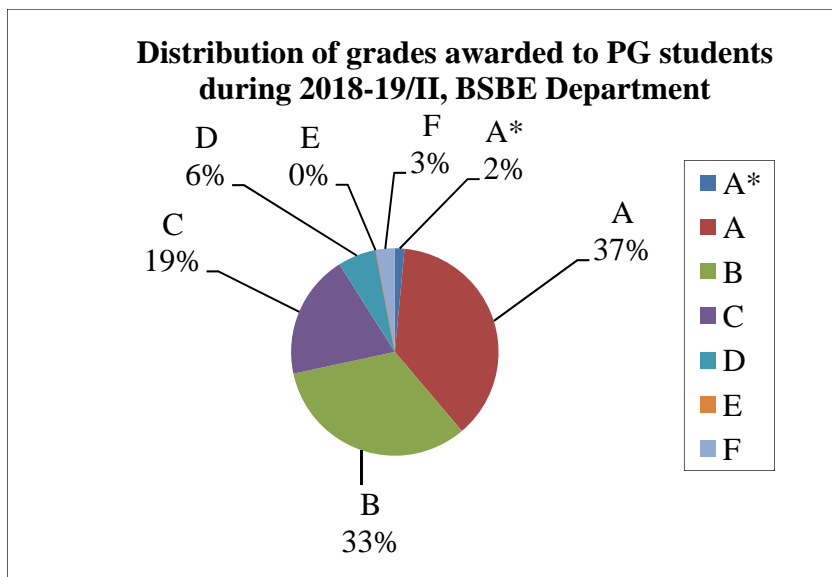


**Figure 24**  
Data for course numbers: PHY101A, PHY102A, PHY103A, PHY204A, PHY210A, PHY226B, PHY306A, PHY307A, PHY412A, PHY422A, PHY432A, PHY461A, PHY462A, PHY473A, PHY500A, PHY501A, PHY502A, PHY524, PHY524A, PHY526A, PHY553A, PHY557A, PHY558A, PHY566A, PHY568A, PHY599A, PHY602A, PHY606A, PHY624A, PHY660A, PHY680A, PHY690M, PHY690N, PHY690V, PSO201A



**Figure 25**

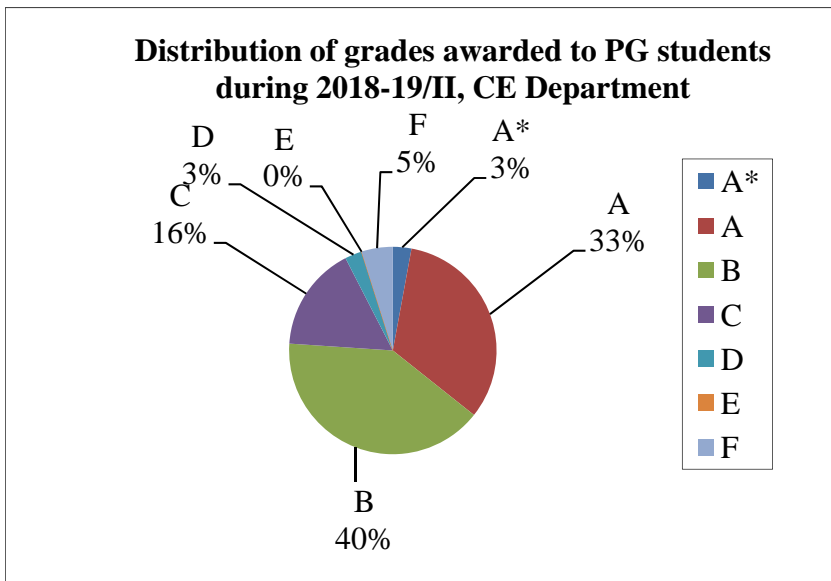
Data for course numbers: AE421A, AE462A, AE471A, AE472A, AE481A, AE604A, AE608A, AE612A, AE621A, AE625A, AE633A, AE640A, AE648A, AE653A, AE662A, AE667A, AE675A, AE681A, AE687A, AE693A, AE698A, AE704A, AE747A



**Figure 26**

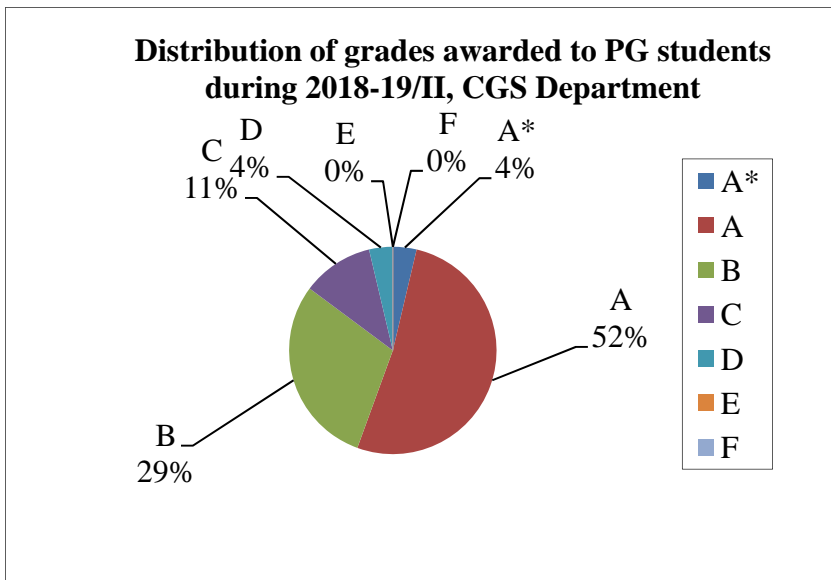
Data for course numbers: BSE221A, BSE321A, BSE322A, BSE421A, BSE499A, BSE612A, BSE614A, BSE615A, BSE616A, BSE633A, BSE652A, BSE653A, BSE654A





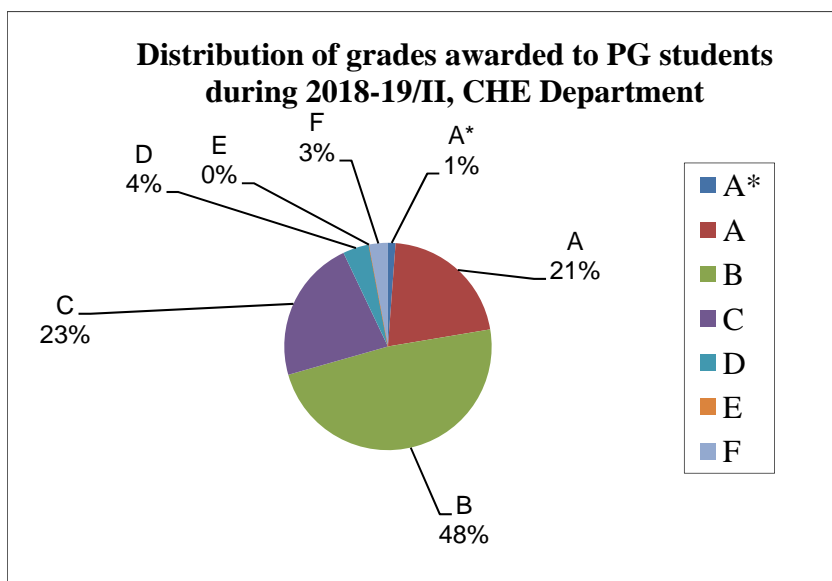
**Figure 27**

Data for course numbers: CE352A, CE412A, CE432A, CE462A, CE491A, CE492A, CE612A, CE613A, CE617A, CE618A, CE619A, CE622A, CE623A, CE629A, CE630A, CE632A, CE636A, CE639A, CE642A, CE643B, CE645A, CE647A, CE667A, CE668A, CE669A, CE673A, CE674A, CE676A, CE684B, CE685A, CE701A, CE721A, CE725A, CE760A, CE763A, CE764A, CE765B, CE766A, CE767B, CE780A, ESO202A



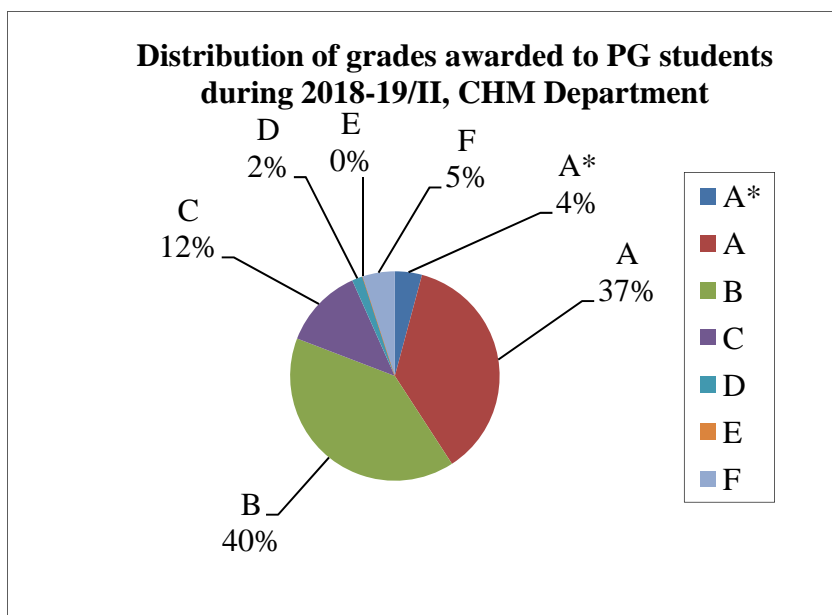
**Figure 28**

Data for course numbers: CGS603A, CGS651A, CGS702A



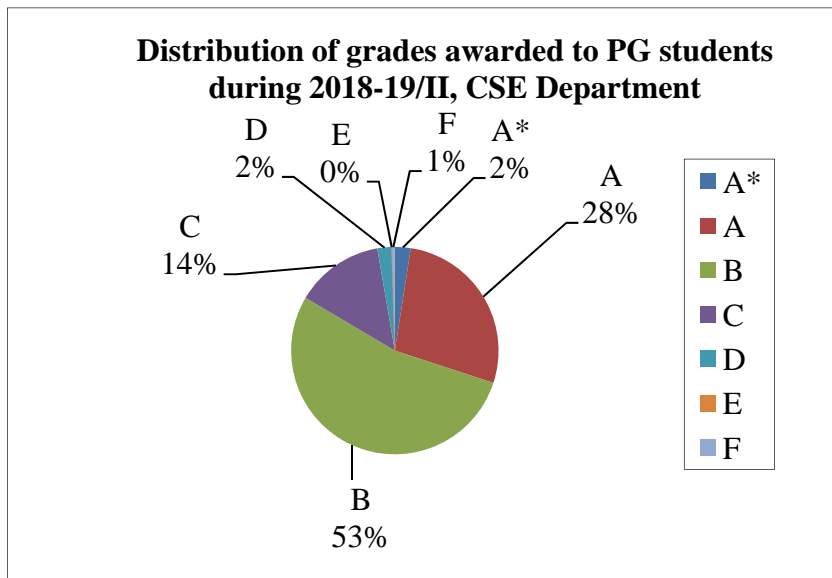
**Figure 29**

Data for course numbers: CHE611A, CHE621A, CHE622A, CHE626A, CHE633A, CHE641A, CHE642A, CHE659A, CHE677A, CHE688A, ESO201A



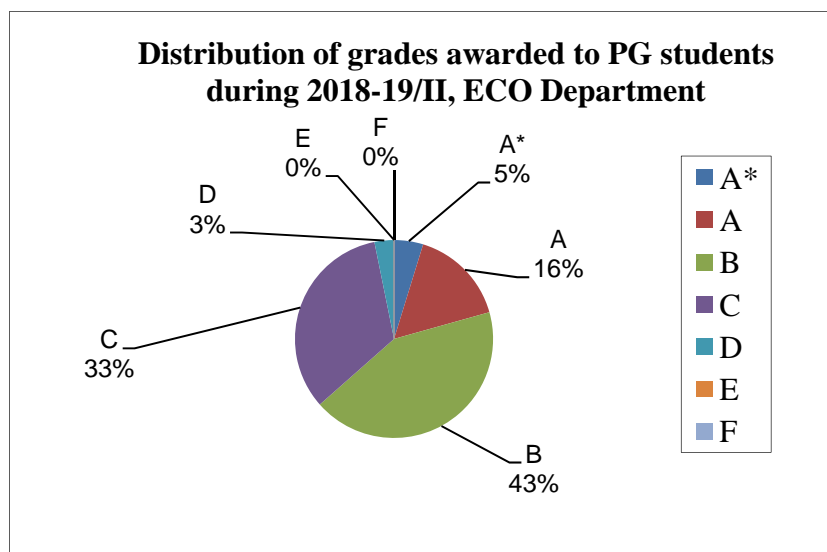
**Figure 30**

Data is for course numbers: CHM342A, CHM443A, CHM481A, CHM492A, CHM599, CHM602A, CHM609A, CHM616A, CHM631A, CHM636A, CHM649A, CHM650A, CHM662A, CHM681A, CHM684A, CHM696A, CSO202A, and CSO203A



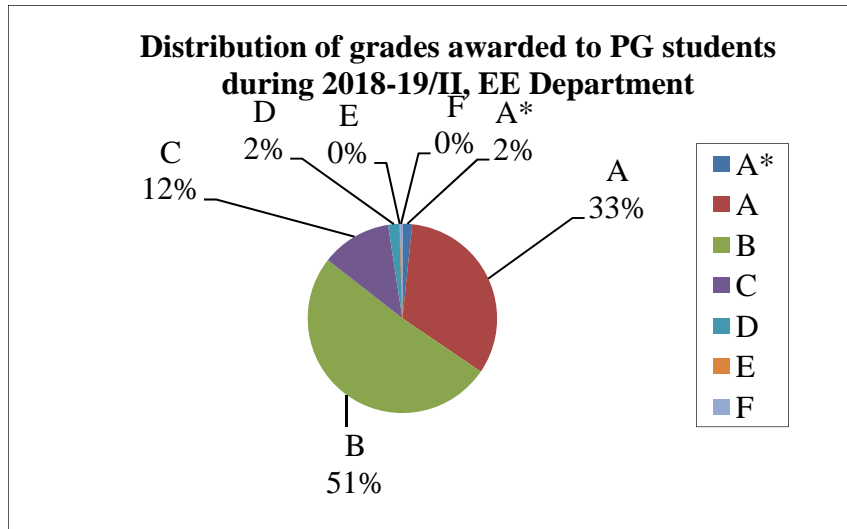
**Figure 31**

Data for course numbers: CS315A, CS335A, CS422A, CS455A, CS628A, CS633A, CS634A, CS636A, CS638A, CS640A, CS641A, CS656A, CS682A, CS687A, CS698C, CS698H, CS698X, CS720A, CS730A, CS731A, CS742A, CS748A, CS783A, CS786A, CS797A, ESO207A



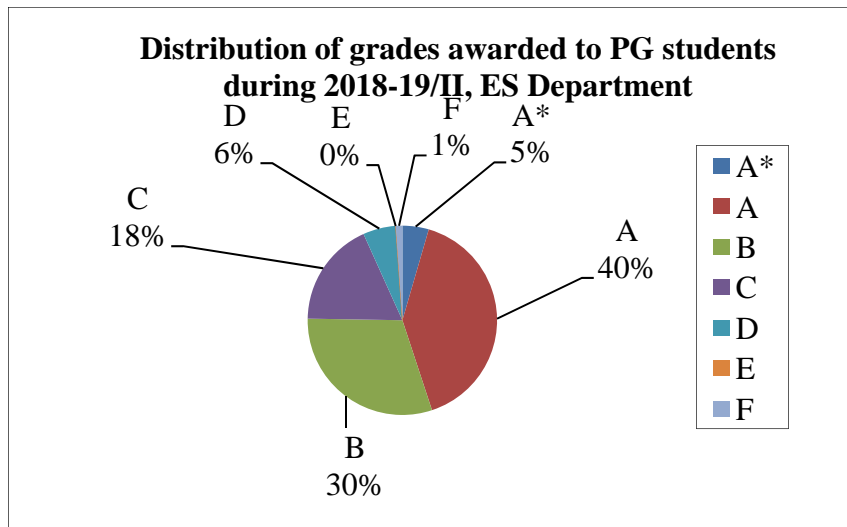
**Figure 32**

Data for course numbers: ECO101A, ECO221A, ECO311A, ECO342A, ECO413A, ECO499A, ECO545A, ECO711A, ECO753A, ECO754A



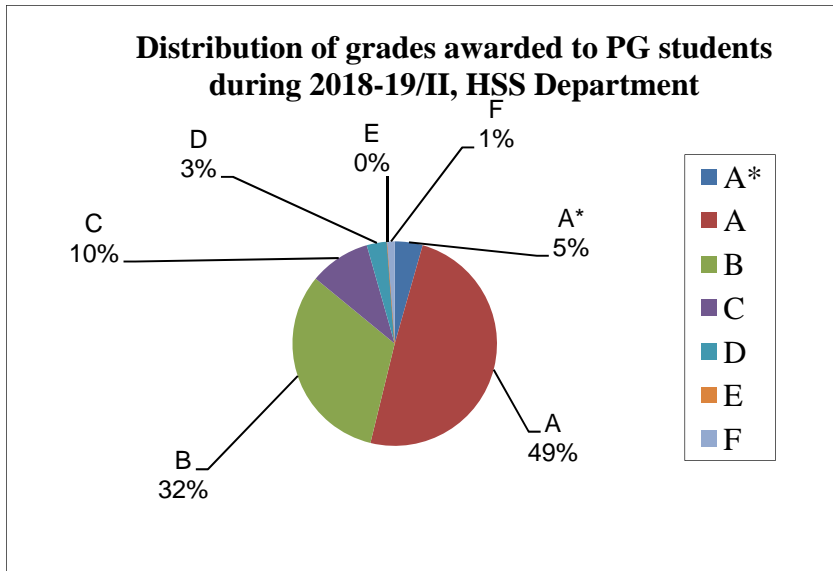
**Figure 33**

Data for course numbers EE250A, EE301A, EE311A, EE321A, EE360A, EE381A, EE391A, EE416A, EE492A, EE600A, EE604A, EE609A, EE618A, EE619A, EE620A, EE623A, EE627A, EE632A, EE633A, EE636A, EE638A, EE639A, EE644A, EE648A, EE658A, EE662A, EE665A, EE671A, EE678A, EE698A, EE698B, EE698C, EE698H, EE698N, EE698O, EE698Q, EE698T, EE698Z



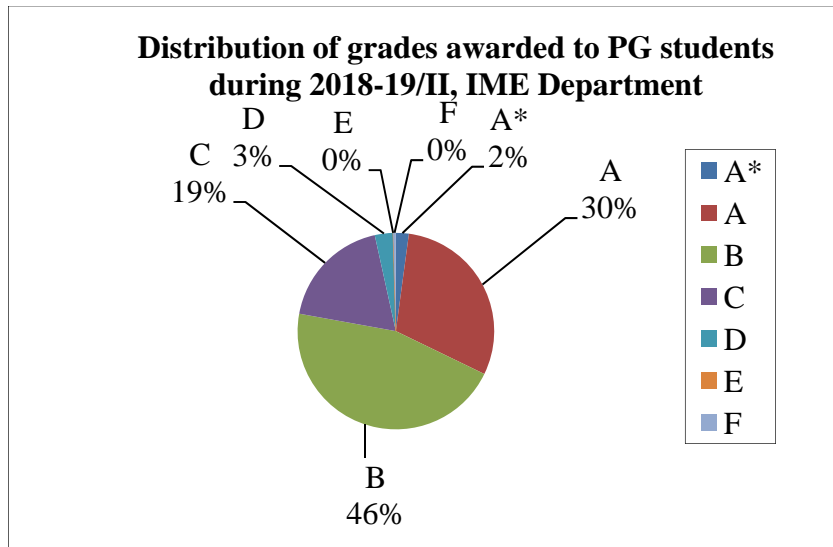
**Figure 34**

Data for course numbers: ES313A, ES315A, ES413A, ES419A, ES648A, ES656A, ES657A, ES660A



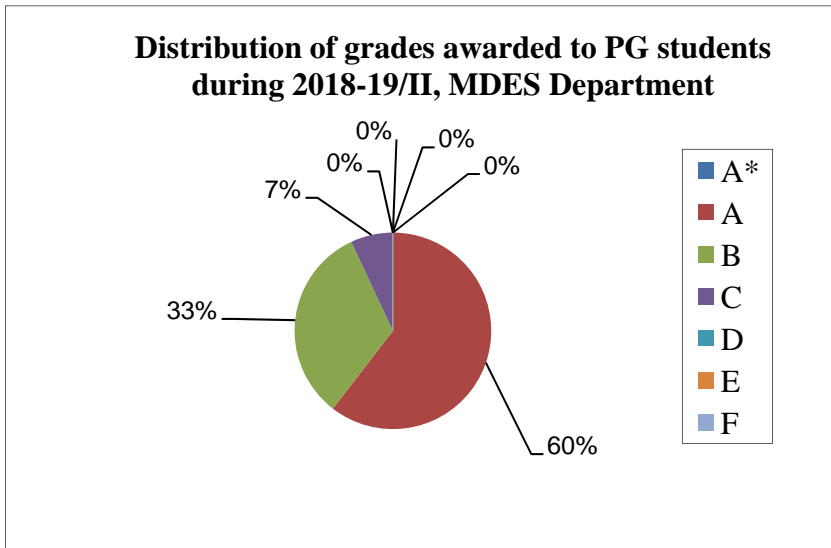
**Figure 35**

Data for course numbers: ART401A, ART402A, ART406A, ART703A, ART708A, ART711A, ECO201A, ECO764A, ENG423A, ENG436A, ENG438A, ENG439A, ENG448A, ENG708A, ENG709A, ENG716A, ENG743A, ENG749A, ENG750A, ENG751A, ENG764A, ENG777A, PHI447A, PHI450A, PSY451A, PSY454A, PSY499A, PSY772A, PSY775A, PSY790A, PSY794A, PSY798A, SOC470A, SOC473A, SOC482A, SOC486A, SOC720A, SOC732A, SOC753A



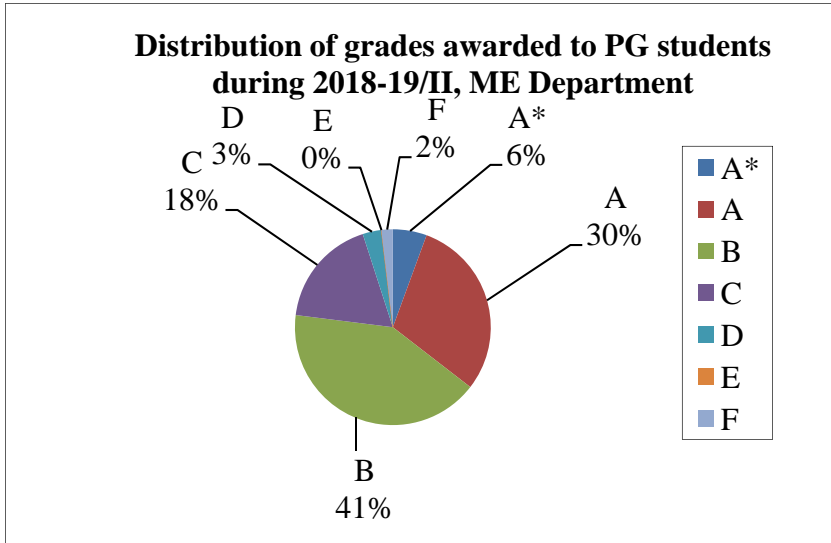
**Figure 36**

Data for course numbers: IME624A, IME625A, IME634A, IME637A, IME639A, IME642A, IME700A, IME797A, MBA616A, MBA617A, MBA622A, MBA633A, MBA643A, MBA652A, MBA661A, MBA665A, MBA702A, MBA703A, MBA704A, MBA732A, MBA746A, MBA747A, MBA771A, MBA773A, MBA775A, MBA776A, MBA781A, MBA782A



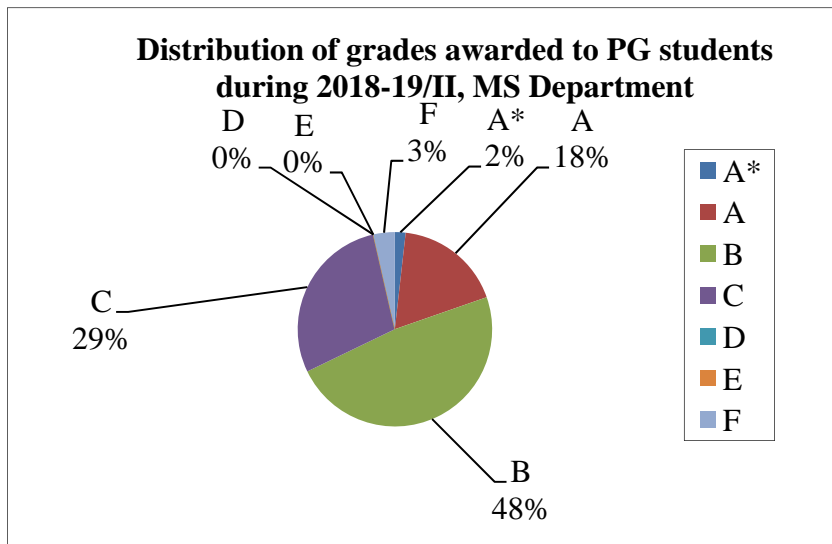
**Figure 37**

Data for course numbers: DES603A, DES623A, DES633A, DES682A



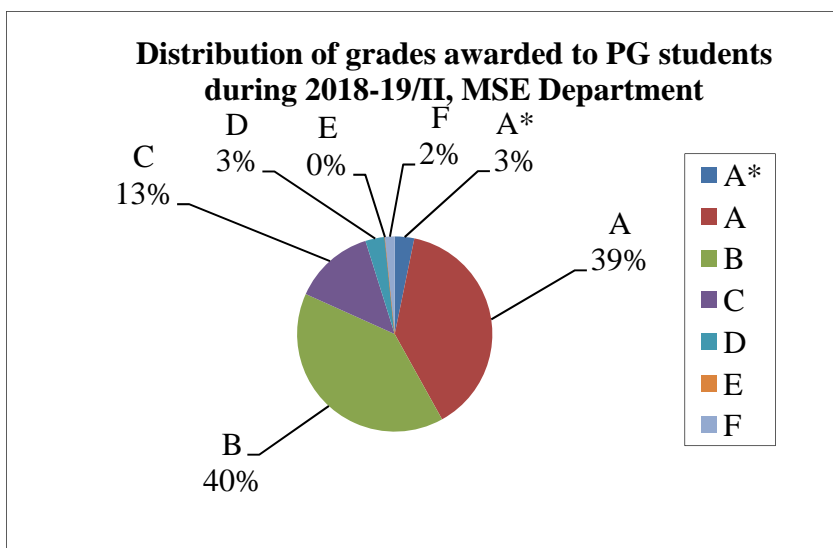
**Figure 38**

Data for course numbers: IDC603A, ME354A, ME452A, ME461A, ME623A, ME627A, ME630A, ME642A, ME643A, ME647A, ME648A, ME649A, ME664A, ME668A, ME698A, ME698B, ME698C, ME698D, ME728A, ME742A, ME751A, ME752A, ME756A, ME763A, ME765A, ME773A, ME778A



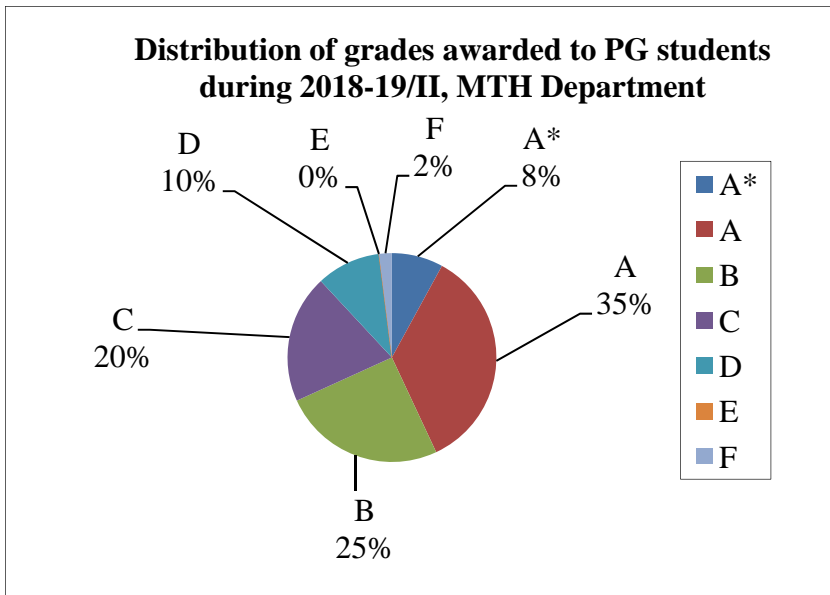
**Figure 39**

Data for course numbers: MS604A, MS605A, MS616A



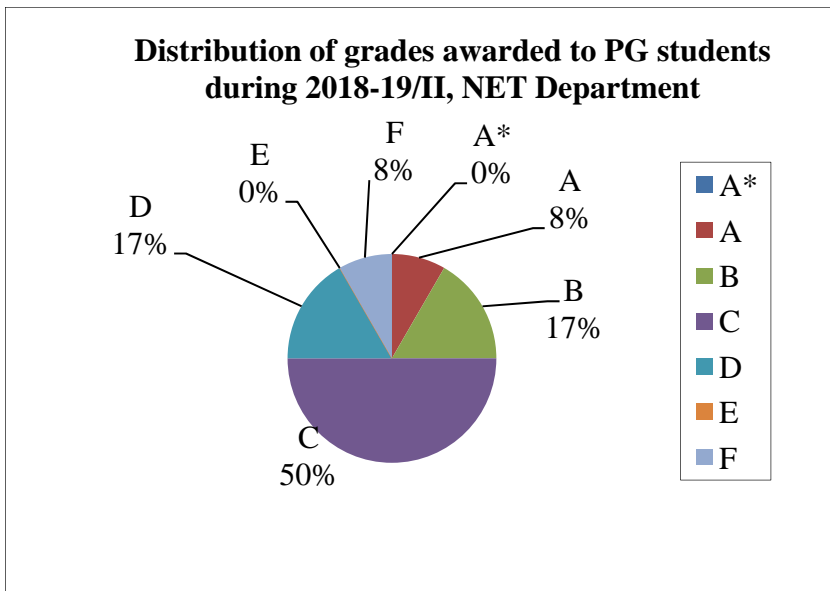
**Figure 40**

Data for course numbers: MSE204A, MSE421A, MSE449A, MSE604A, MSE611A, MSE616A, MSE617A, MSE624A, MSE631A, MSE638A, MSE639A, MSE667A, MSE676A, MSE683A



**Figure 41**

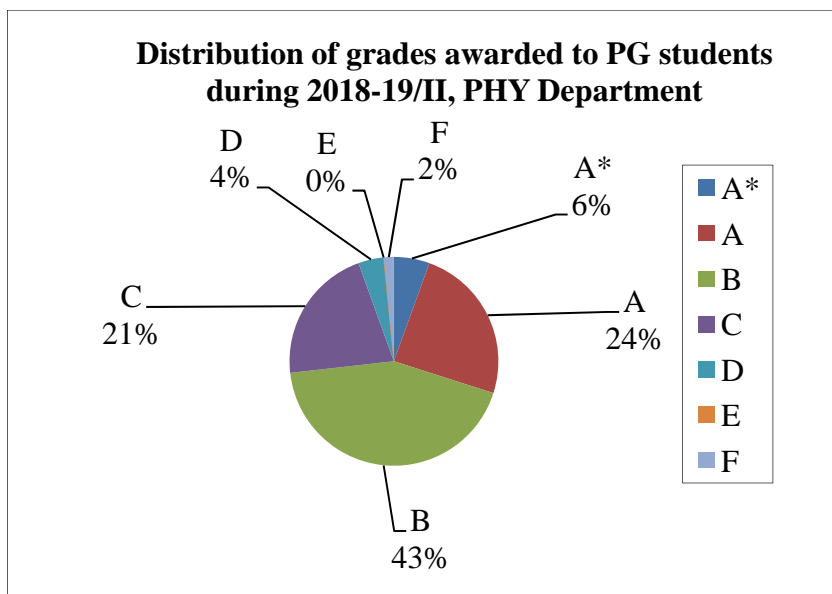
Data for course numbers: MTH204A, MTH308A, MTH309A, MTH404A, MTH418A, MTH421A, MTH424A, MTH514A, MTH535A, MTH614A, MTH624A, MTH628A, MTH635A, MTH638A, MTH649A, MTH652A, MTH653A, MTH678A, MTH686A, MTH696A, MTH697A, MTH698A, MTH699A, MTH701A, MTH702A, MTH703A, MTH708A, MTH751A, MTH752A, MTH770A



**Figure 42**

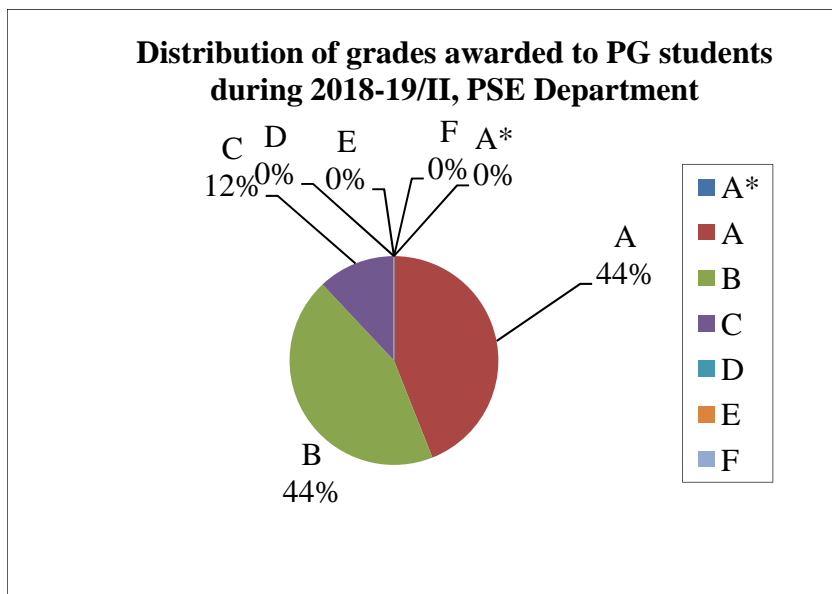
Data for course numbers: NT611A





**Figure 43**

Data for course numbers: PHY204A, PHY210A, PHY226B, PHY306A, PHY307A, PHY422A, PHY432A, PHY462A, PHY473A, PHY524A, PHY526A, PHY553A, PHY558A, PHY566A, PHY568A, PHY602A, PHY604A, PHY606A, PHY624A, PHY660A, PHY663A, PHY680A, PHY690M, PHY690V, PHY699A, PSO201A



**Figure 44**

Data for course numbers: PSE604A, PSE605A

## Annexure – 1

Average grade awarded to students across the Institute in 2018-19/II

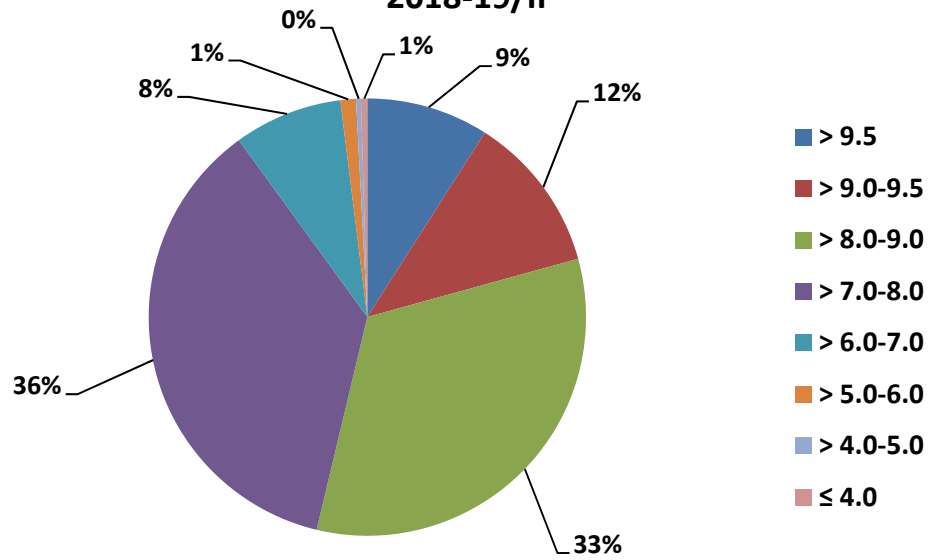
Category of Students	% of Students with different grades							Average Grade (out of 10.0)
	A*	A	B	C	D	E	F	
All UG students (including core courses)	2	21	33	25	14	1	5	6.95
UG students, in Core courses only	1	18	34	26	15	1	5	6.81
All PG Students	3	32	44	16	3	0	2	8.14

## Annexure – 2

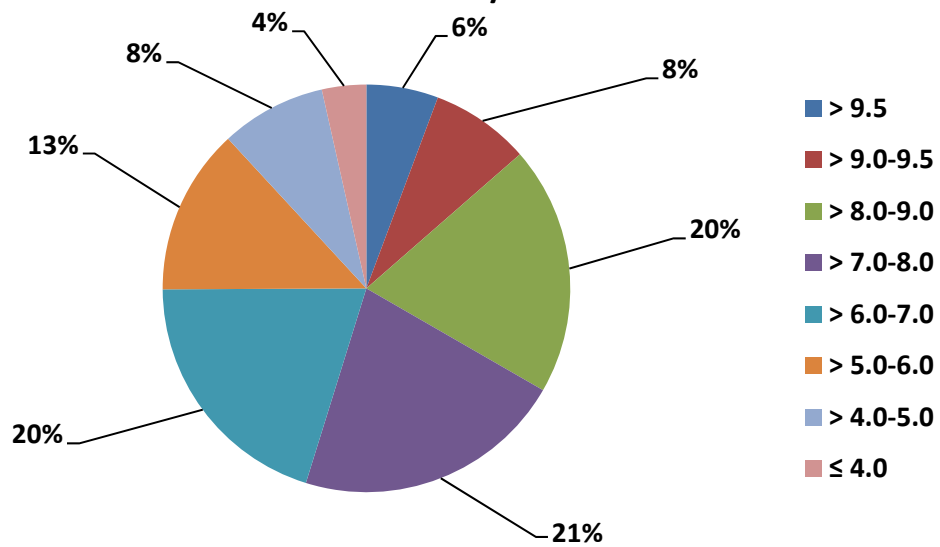
Cumulative Performance Index (CPI) Statistics of All Registered Students in 2018-19/II

Program	Total No.	> 9.5	> 9.0-9.5	> 8.0-9.0	> 7.0-8.0	> 6.0-7.0	> 5.0-6.0	> 4.0-5.0	≤ 4.0
PG	2777	251	324	917	1007	223	32	10	13
		9	12	33	36	8	1	0	0
UG	4000	228	315	790	859	805	528	334	141
		5.7	7.9	19.8	21.5	20.1	13.2	8.4	3.5
CORE COURSES (UG)	1033	54	77	173	247	195	139	87	61
		5.2	7.5	16.7	23.9	18.9	13.5	8.4	5.9

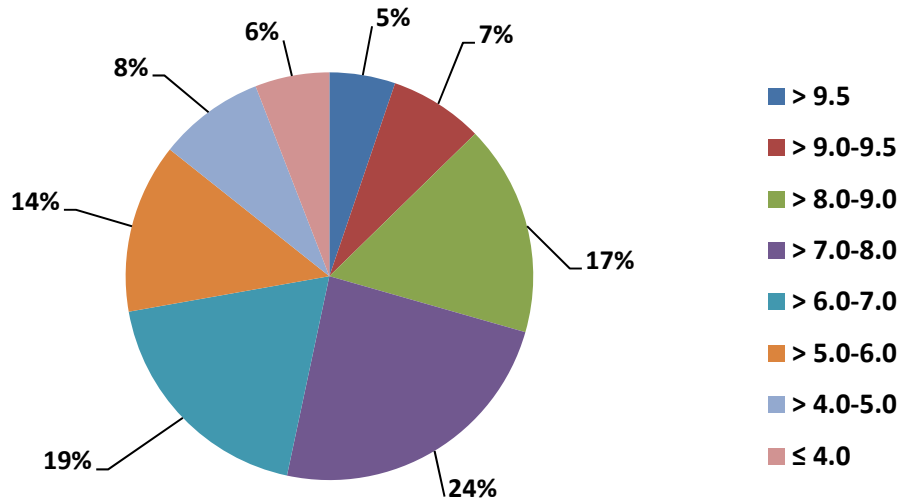
**CPI (Percentage) of All PG Students Registered in 2018-19/II**



**CPI (Percentage) of All UG Students Registered in 2018-19/II**



**CPI (Percentage) of All CORE COURSES (UG)  
Students Registered in 2018-19/II**



\*\*\*\*\*